

To Zion/Carry My Burden

Mary Jones
Nancy Jenkins

♩ = 75

Piano

5
car-ry my broth-er up Rock-y Ridge, I'll car-ry my sis-ter o-ver the bridge, I'll

5
Pno.

9
car-ry my child - all a-long the way. To Zi-on we go! To Zi-on we hope! For

9
Pno.

Detailed description: This is a sheet music score for the hymn 'To Zion/Carry My Burden'. It features a vocal line and piano accompaniment. The score is divided into three systems. The first system shows the beginning of the piece with a tempo marking of quarter note = 75. The piano part consists of chords and a simple bass line. The second system starts at measure 5 and includes the lyrics 'car-ry my broth-er up Rock-y Ridge, I'll car-ry my sis-ter o-ver the bridge, I'll'. The piano accompaniment continues with chords and a bass line. The third system starts at measure 9 and includes the lyrics 'car-ry my child - all a-long the way. To Zi-on we go! To Zi-on we hope! For'. The piano accompaniment continues with chords and a bass line. The key signature is three flats (B-flat, E-flat, A-flat) and the time signature is 4/4.



©2009 by Mary Jones and Nancy Jenkins
Making copies for non-commercial use is permitted
This and other sheet music may be downloaded free at:
www.melonpatchmusic.com

To Zion/Carry My Burden

2
7₃

Vocal line for measures 7-9. The melody starts on a half note G4, followed by quarter notes A4, B4, C5, B4, A4, G4. The line ends with a whole rest.

Zi - on we-know is - home!

Pno.

Piano accompaniment for measures 7-9. The right hand plays a series of chords: G4, A4, B4, C5, B4, A4, G4. The left hand plays a bass line of G2, F2, E2, D2, C2, B1, A1, G1.

17

rit. *a tempo*

Vocal line for measures 17-20. The melody starts with a whole rest, then quarter notes G4, A4, B4, C5, B4, A4, G4. The line ends with a whole rest.

I'll watch ov - er my moth - er who's giv - en too much, I'll hold to my fath - er who's

Pno.

Piano accompaniment for measures 17-20. The right hand plays a series of chords: G4, A4, B4, C5, B4, A4, G4. The left hand plays a bass line of G2, F2, E2, D2, C2, B1, A1, G1.

21

Vocal line for measures 21-24. The melody starts with quarter notes G4, A4, B4, C5, B4, A4, G4. The line ends with a whole rest.

frees-ing to the touch, I'll shel-ter my ba-by from the wind and the storm. To Zi-on we go! To

Pno.

Piano accompaniment for measures 21-24. The right hand plays a series of chords: G4, A4, B4, C5, B4, A4, G4. The left hand plays a bass line of G2, F2, E2, D2, C2, B1, A1, G1.

25

Vocal line for measures 25-28. The melody starts with quarter notes G4, A4, B4, C5, B4, A4, G4. The line ends with a whole rest.

Zi - on we hope! For Zi - on we know is - home!

Pno.

Piano accompaniment for measures 25-28. The right hand plays a series of chords: G4, A4, B4, C5, B4, A4, G4. The left hand plays a bass line of G2, F2, E2, D2, C2, B1, A1, G1.

To Zion/Carry My Burden

29

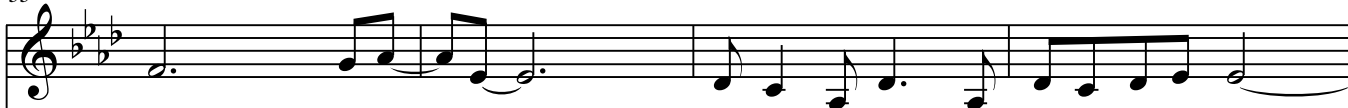


When I - knew, the Spir-it had touched me; I can't de-ny the truth.

Pno.

Piano accompaniment for measures 29-32. The right hand features chords and moving lines, while the left hand provides a steady bass line.

33



I will - go - - - for-ward in faith no mat-ter how-it blows. -

Pno.

Piano accompaniment for measures 33-36. The right hand includes some complex chordal textures and arpeggiated figures.

37



Please car-ry my bur-den, it's heav-y to bear! Please

Pno.

Piano accompaniment for measures 37-40. The accompaniment follows the time signature changes and provides harmonic support for the vocal line.

41



give me the strength to help those in de-spair. We know Thou art with us, Our

Pno.

Piano accompaniment for measures 41-44. The right hand features chords and moving lines, while the left hand provides a steady bass line.

To Zion/Carry My Burden

44



lives are in Thy hands. To Zi-on we go! To Zi-on we hope! For Zi-on we know is -

Pno.

48

rit.



- home! To Zi-on we go! To Zi-on we hope! For Zi-on we know is -

Pno.

52

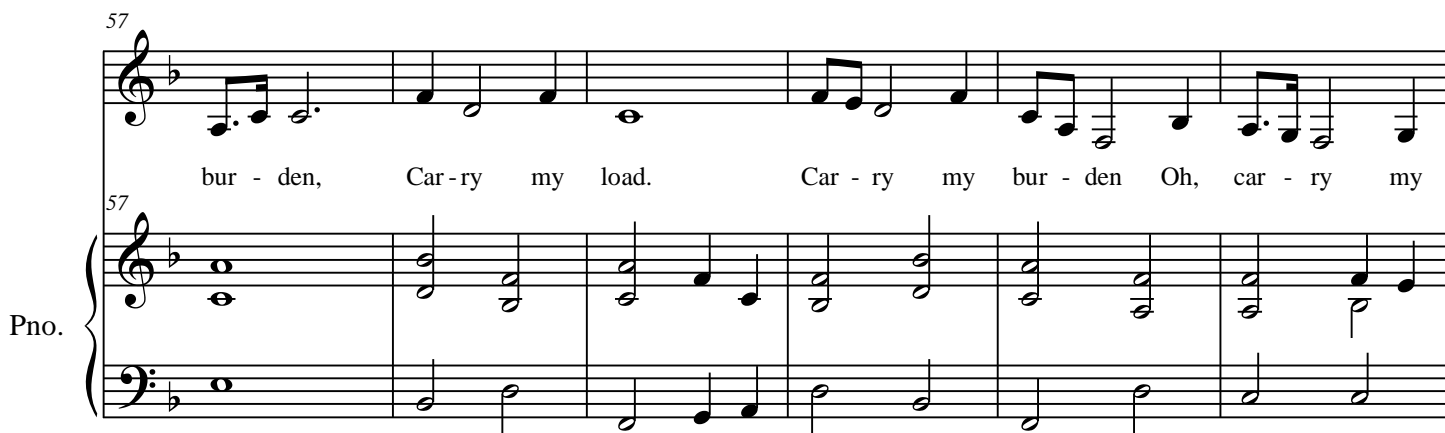
$\text{♩} = 65$



- home! Car - ry my

Pno.

57



bur - den, Car - ry my load. Car - ry my bur - den Oh, car - ry my

Pno.

To Zion/Carry My Burden

63

load. When the storms and the jour - ney try to break my re -

Pno.

68

solve, - When my hope and my - cour - age are wain - ing, I - will -

Pno.

72

- call. - - - Car - ry - my bur - den, Car - ry my load. Car - ry my

Pno. LH

78

bur - den, Oh car - ry my load. Take me to heav - en, And -

Pno.

To Zion/Carry My Burden

83

bring me - home, - Oh - seal me in heav - en; Please

Pno.

Detailed description: This system contains the first two staves of music. The top staff is a vocal line in G major, starting with a whole note G4, followed by quarter notes A4, B4, C5, D5, E5, F5, G5, and a quarter rest. The piano accompaniment (Pno.) consists of two staves. The right hand starts with a quarter rest, followed by quarter notes G4, A4, B4, C5, D5, E5, F5, and G5. The left hand starts with a quarter note G3, followed by quarter notes A3, B3, C4, D4, E4, F4, and G4.

87

take - me as Thine - own. - - - Car - ry - my bur - den,

Pno.

Detailed description: This system contains the next two staves. The vocal line continues with quarter notes G4, A4, B4, C5, D5, E5, F5, and G5. The piano accompaniment features a more active right hand with chords and moving lines, while the left hand remains mostly chordal.

91

Car - ry my load. Car - ry my bur - den, Oh - car - ry my

Pno.

Detailed description: This system contains the next two staves. The vocal line has quarter notes G4, A4, B4, C5, D5, E5, F5, and G5. The piano accompaniment includes a section with a tremolo effect in the right hand, indicated by a wavy line, and a more active left hand with eighth notes.

96 *Molto Rit.*

load. Oh - car - ry my load.

Pno.

Detailed description: This system contains the final two staves. The tempo marking *Molto Rit.* is present. The vocal line has quarter notes G4, A4, B4, C5, D5, E5, F5, and G5. The piano accompaniment is significantly slower and more sparse, with fewer notes and a focus on sustained chords.